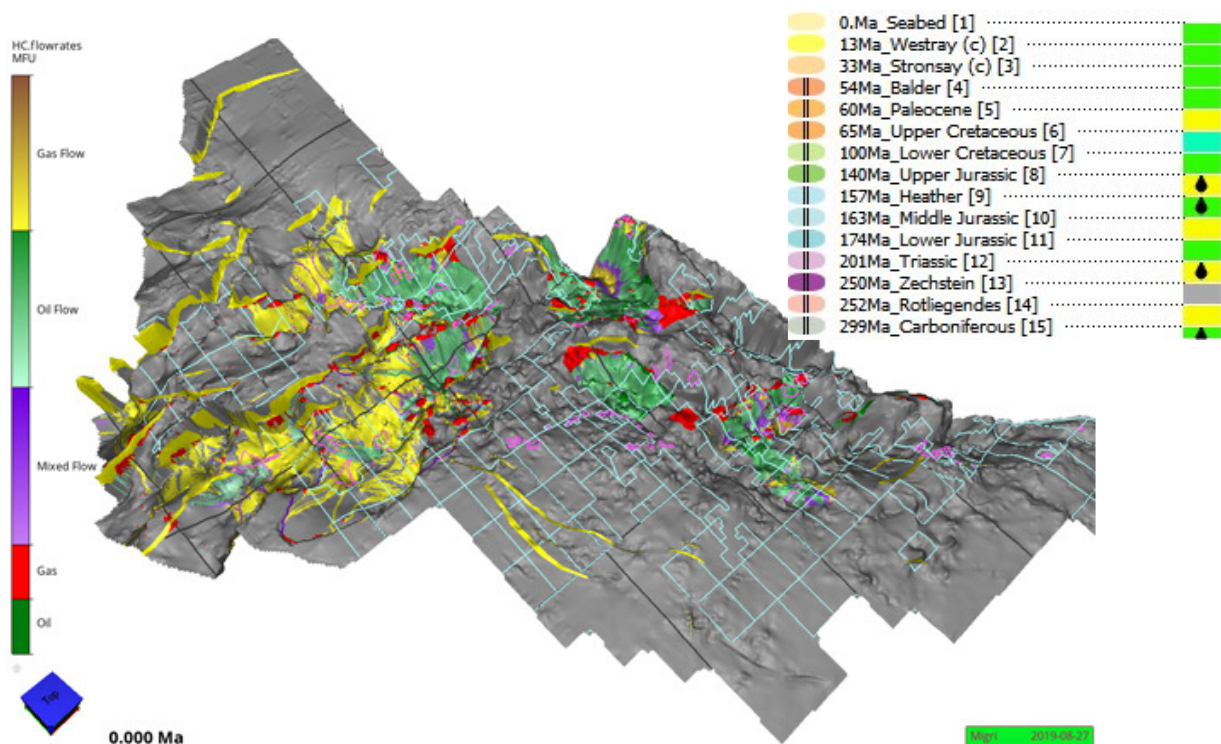


Open basin model for UK Central North Sea now available

Migris is pleased to announce the release of a public 3D basin model covering the UK Central North Sea (CNS) and Moray Firth areas. The model accounts for HC generation and migration within layers of Permian to Paleogene age. The layer model has been built upon recently released datasets from the UK Oil and Gas Authority. The model input can easily be modified to incorporate your own interpretations, such as local depth and facies maps.

The CNS model can be simulated with or without faults in different resolutions (250m – 1000m). The 750 - 1000m models can be used with the low-cost MigriX software. A free one-month trial of MigriX is available if you want to test out the UK models yourself.



Example of modelled HC migration in the Heather Fm. layer. Faults are shown in yellow colour.

Inset: Layers in the CNS basin model. Source rocks are marked by oil droplets.

The full CNS model dataset is available for download from www.migris.no/opendata. Migris staff will be available for consultancy work using the model in combination with your own data for license studies and/or licensing round applications (contact are.tommeras@migris.no).