



A Client Data Portal offers you the ability to deliver your data through a professional and customized, cloud software application.

The Client Data Portal provides a separate version of the PDR with a re-branded Welcome screen to suite your company look and an empty database waiting to be populated with your data. Utilizing the existing data management and visualisation functionality of the PDR platform, a company portal provides an ideal tool for the delivery of your data products. Whether it is maps, well data, documents or reports, a Client Data Portal provides a smooth and cohesive user experience enabling your customer to maximize the value of your products. The company portal offers:

- A rebranded welcome screen to match your brand
- A blank database capable of storing maps, datasets, documents, etc
- Control over usership, the data they access and for how long

Competitive Advantage

Delivering data to your clients in a customised, cloud-based software application offers a competitive advantage for your overall product. Your clients can seamlessly access the data they want, removing the non-productive steps of receiving, loading, and customising data, empowering them to implement your products in their studies and extract maximum value.

Addressing the changing industry and your market is key to maximising revenue from your existing data products. With sales of large regional/multi-well databases increasingly challenging, a Client Data Portal offers flexibility in your sales strategy by allowing you to continue to offer large databases as well as subsets of these products. The **Sell by the Well** and **Buy by the Block** approach offers a new mechanism to engage the growing market of smaller buyers, unlocking new sales opportunities for your products.

Bespoke Branding

A fully rebranded “Welcome Screen” is included, enabling you to present your data through a branded portal that is consistent with your business.

Any appropriate image and text can be included on the Welcome Screen which acts as the central landing page for your clients. The different sections available on the landing page can be configured, however the Client Data Portal will include Map Viewer, GIS Editor, Log Viewer, Well Index, Data Section and a PDR ‘button’ which will navigate users to the full PDR.

Loading Screen

The existing loading screen provides a unique opportunity to engage your usership with a number of marketing components available for customization. Examples of this can be seen on the live PDR, however they include a live Newsfeed and Marketing “cards”. Aeon reserve the rights to the advertisement banner to highlight the full PDR (only), however this is open to discussion.

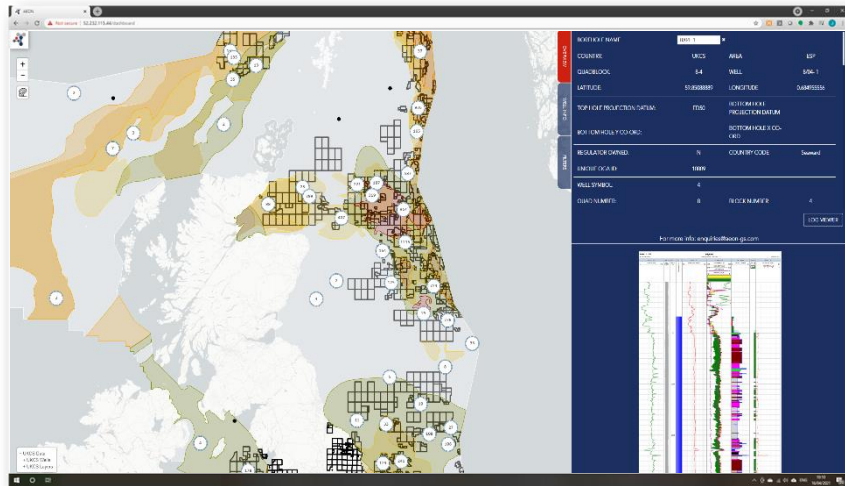
The loading screen offers you the ability to market your internal and any partner products.





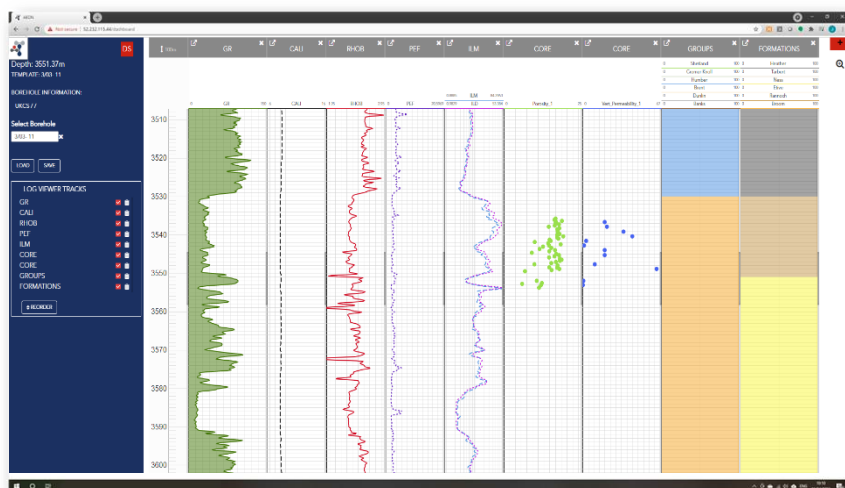
User Management

Your company admin will control access and allow specific users access to distinct datasets within the portal. The admin will have options as to what data a user can access, for how long and if downloading/edit functionality is permitted. These controls can be set for every dataset available on the portal.



Map Viewer

The Map Viewer is a dynamic visualization suite which incorporates spatial and subsurface data within a single GIS application. Users can view customised maps and interrogate the associated metadata whilst reports can be accessed in the same dynamic environment, interactively selecting them from a well or a representative polygon. This workflow optimises users time, removing the conventional “view map in software - read report online” approach. A collapsible right-hand menu offers flexibility to users in viewing different datasets.



Log Viewer

The Log Viewer is a powerful borehole visualization tool allowing any depth-based data to be visualized, reviewed and analysed.. The data is uploaded by the admin via .csv file with no editing functionality available to the user. This data can then be presented through a range of tools on the tracks (e.g. curve, points). Data visualization (e.g. colour schemes, track fill) can be set by the Admin through a “template” or changed by each user (for their login only).

Well	Latitude	Longitude	Top Hole Projection Datum	Bottom Hole Projection Datum	Bottom Hole X Co-ord	Bottom Hole Y Co-ord	Regulator
3.3 3403-C10	60.85647628	1.46923833	ES00	ES00	60.82319756	5.41995231	N
3.3 3403-C11	60.85641326	1.46927161	ES00	ES00	60.82319756	5.41995231	N
3.3 3403-C12	60.85641326	1.46927161	ES00	ES00	60.82319756	5.41995231	N
3.3 3403-C13	60.85641326	1.46927161	ES00	ES00	60.82319756	5.41995231	N
3.3 3403-C14	60.85641326	1.46927161	ES00	ES00	60.82319756	5.41995231	N
3.3 3403-C15	60.85641326	1.46927161	ES00	ES00	60.82319756	5.41995231	N
3.1 3401-1	60.91641389	1.53682222	ES00	ES00	60.84530302	1.4259545	N
3.1 3401-2	60.88978889	1.54979889	ES00	ES00	60.82319756	5.41995231	N
3.1 3401-3	60.88978889	1.53327778	ES00	ES00	60.82319756	5.41995231	N
3.2 3402-1	60.92522777	1.24309555	ES00	ES00	60.92522777	1.24309555	N
3.2 3402-2	60.89822777	1.20986555	ES00	ES00	60.89822777	1.20986555	N
3.2 3402-3	60.92522777	1.23011111	ES00	ES00	60.92522777	1.23011111	N
3.2 3402-4	60.88294444	1.29238888	ES00	ES00	60.88294444	1.29238888	N
3.2 3402-5	60.91059722	1.32928056	ES00	ES00	60.91059722	1.32928056	N
3.2 3402-6	60.86345559	1.32648633	ES00	ES00	60.86345559	1.32648633	N
3.2 3402-7	60.97288889	1.36347222	ES00	ES00	60.97288889	1.36347222	N

Well INDEX

The Index is a tabular representation of the wells uploaded within your Client Portal. The user has the ability to select a row (well) and review / filter the associated data through the right-hand menu. The data held in these fields appear throughout the application allowing maximum visibility of well metadata.



PDR: Data Marketplace

In addition to the benefits of a professional interface for delivering your data to your clients and the flexibility in your sales strategy, Client Data Portal clients have the option to join the PDR Data Marketplace to further increase exposure and sales. The PDR marketplace offers you the ability to present your products to the wider PDR community. Through a simple checkout procedure any PDR user would have the ability to review and purchase access to your products, secured exclusively to their PDR account. Log into the PDR or speak to one of our team to find out more about the Data Marketplace and how it might benefit your business. purchased

Feature	Included	Optional Extra	Currently Available	Coming soon
Mapping Interface	✓		✓	
- RH menu "Overview"	✓		✓	
- RH menu "Well Info"	✓		✓	
- RH menu "Filters"	✓		✓	
- RH menu "Layer Editor"	✓			✓
- RH menu "Data Filters"	✓			✓
Shapefile visualization	✓		✓	
Vector visualization	✓		✓	
Grids visualization	✓			✓
Wells locations	✓		✓	
"In Portal" Document Viewer	✓		✓	
Index	✓		✓	
Wells list	✓		✓	
Wells metadata	✓		✓	
Custom Columns	✓		✓	
- RH menu "Overview"	✓		✓	
- RH menu "Well Info"	✓		✓	
- RH menu "Filters"	✓		✓	
- RH menu "Layer Editor"	✓			✓
- RH menu "Data Filters"	✓		✓	
Log Viewer	✓		✓	
Data visualization	✓		✓	
- multiple datasets on a single track	✓		✓	
- set line colour / fill / line type	✓		✓	
- set track headers	✓		✓	
- set track limits	✓		✓	
View core imagery		✓	✓	
View structures "tad poles"		✓	✓	
View cumulative plots		✓	✓	
Create Template views	✓		✓	
Rebranded "Agreements screen"	✓		✓	
Rebranded "Welcome Screen"	✓		✓	
Rebranded "Loading screen"	✓		✓	
UI re-styling		✓	✓	
Core Viewer		✓	✓	
Bespoke Dashboards		✓	✓	
User Management	✓			✓
Database Suite	✓			✓
Team Bio Page		✓		
PDR: Data Marketplace	✓		✓	